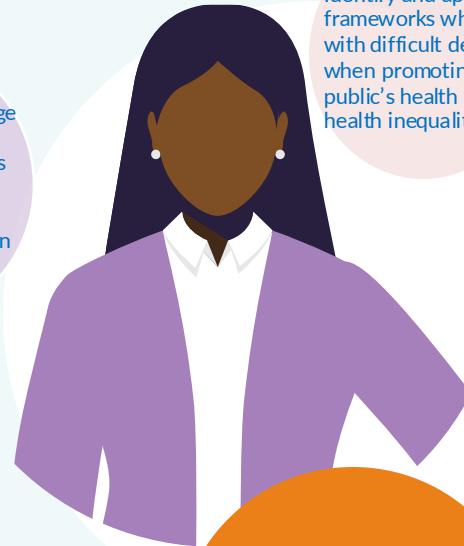


# RCGP Curriculum – Core Capabilities



# RCGP Curriculum – Core Capabilities for GPwER framework population health / health inequalities

August 2024



## 5. Caring for people, wider community and the environment.

Provide leadership to drive improvement in health outcomes and the reduction of health inequalities.

Communicate with others to improve health outcomes and reduce health inequalities.

Design and manage programmes and projects to improve health and reduce health inequalities.

Prioritise and manage resources at a population/ systems level to achieve equitable health outcomes and return on investment.

## 4. Working in organisations and systems

Work within political and democratic systems and with a range of organisational cultures to improve health outcomes and reduce health inequalities.

Work in a commissioning-based culture to improve health outcomes and reduce health inequalities.

Work collaboratively across agencies and boundaries to improve health outcomes and reduce health inequalities.

## 3. Managing complex and long-term care

Work with, and through, policies and strategies to improve health outcomes and reduce health inequalities.

Promote population and community health and wellbeing, addressing the wider determinants of health and health inequalities.

## 1. Knowing yourself and relating to others

Understand and apply the principles underpinning public service.

Identify and apply ethical frameworks when dealing with difficult decisions when promoting the public's health and reducing health inequalities.

Demonstrate the attitudes and behaviours expected of a good doctor.

Treat others fairly and with respect and acting without discrimination or prejudice.

Audit, evaluate and re-design services and interventions to improve health outcomes and reduce health inequalities.

## 2. Applying clinical knowledge and skill

Measure, monitor and report population health and wellbeing; health needs; risks; inequalities; and use of services.

Promote population and community health and wellbeing, addressing the wider determinants of health and health inequalities.

Protect the public from environmental hazards, communicable disease and other health risks, while addressing inequalities in risk exposure and outcomes

Work to, and for, the evidence base, conduct research, and provide informed advice.

Ensure compliance with statutory legislation and practice requirements, including compliance with mandatory training.

Manage the factors that influence your performance.

Adhere to professional codes of conduct, occupational codes, employer behaviour frameworks and practice standards.

Blue text = Public Health Skills and Knowledge Framework

Black text = GP Curriculum